



16K Revolution Service Kit Instructions

86016



Equipment Required:

Wrenches: 15/16", 1 1/8", Torque Wrench, Rubber Mallet

Included Service Kit Items:

1	Qty. (1)	Wear Plate
2	Qty. (1)	Pivot Bushing
3	Qty. (1)	Bearing Cup
4	Qty. (1)	Bearing
5	Qty. (2)	Bolt, 5/8"-11 X 1 3/4" Grade 5 Hex Bolt w/ Nylon
6	Qty. (2)	5/8" Conical Washer
7	Qty. (1)	Teflon Lube
8	Qty. (1)	Instructions

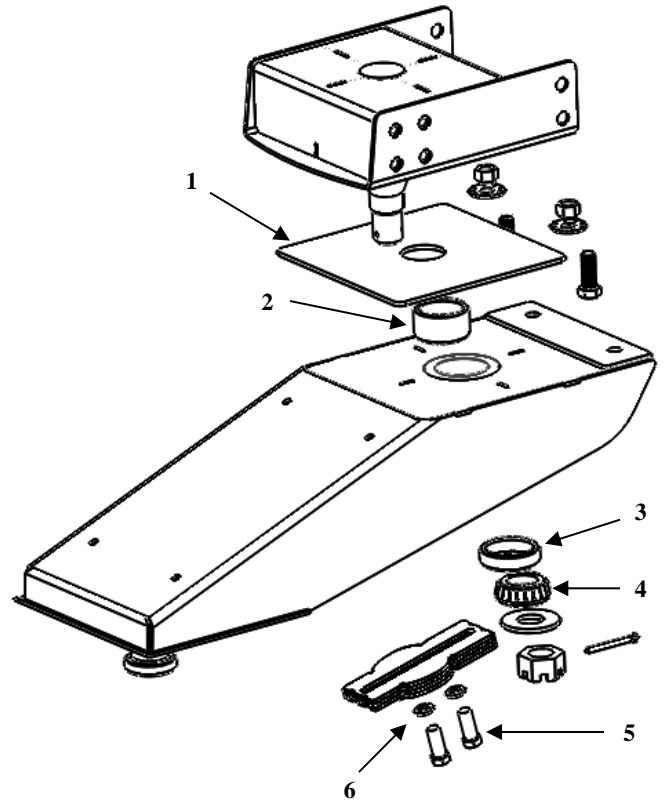


Figure 1

⚠ WARNING:
Failure to follow all of these instructions may result
in death or serious injury!

16K Revolution Service Kit

Instructions

1. Remove the Revolution and Turret from the trailer. Make note of the bolt locations onto the trailer wings.
2. Place the unit on a bench and remove the Turret and all the hardware that is going to be replaced. A rubber mallet and a screwdriver may be needed to remove the old pivot bushing from the Revolution arm.
3. Install the new pivot bushing into the Revolution arm and put lube around the inside of the bushing. (figure 1)
4. Place new wear plate onto the Revolution Arm, making sure the chamfer side faces down.
5. Apply lube on the wear plate.
6. Re-install the turret onto the Revolution Arm. A rubber mallet may be needed to fully seat it.
7. Install the Bearing Cup, Bearing (with lube applied), flat washer, and the nut (figure 2). Torque nut to **80 ft-lbs**, then install the cotter pin. (Make sure the Bearing is orientated per figure 2.)

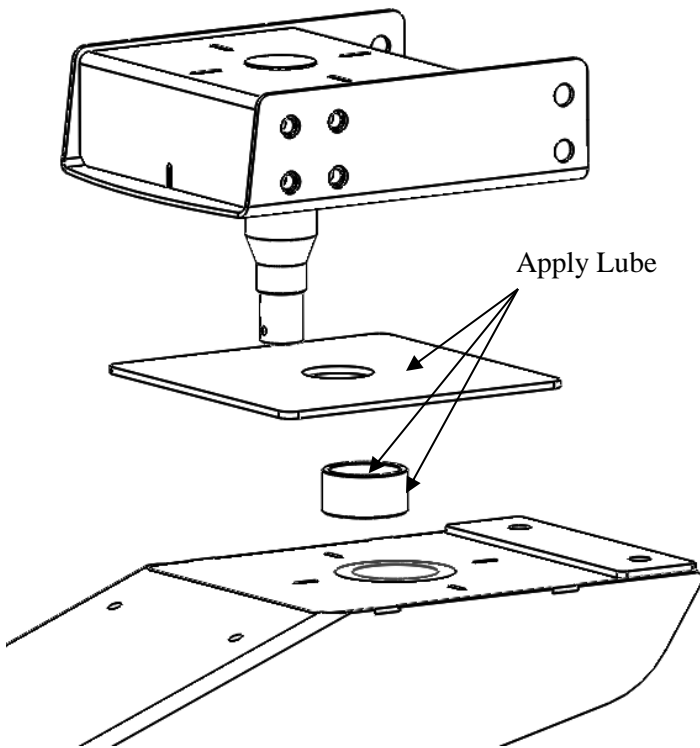


Figure 1

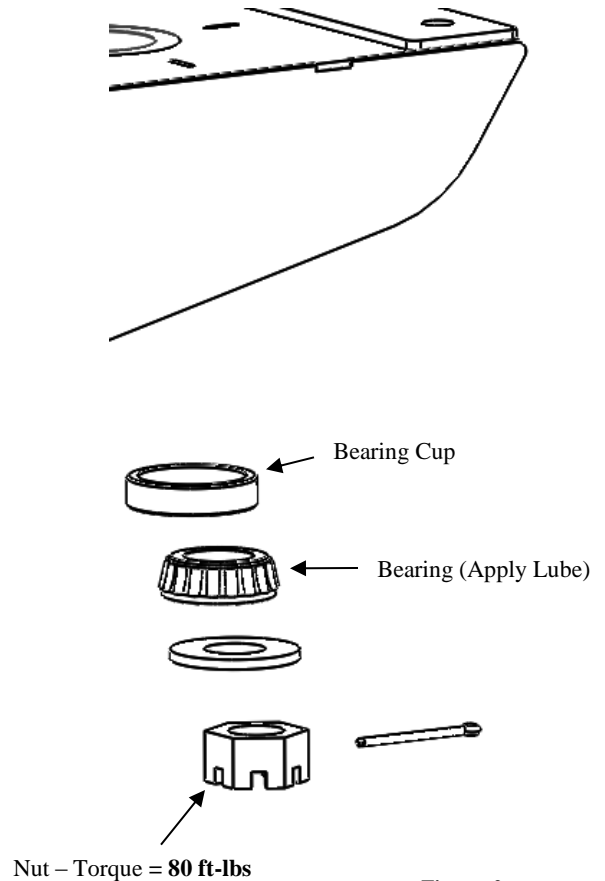


Figure 2

16K Revolution Service Kit

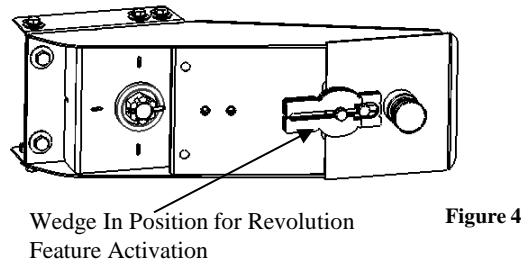
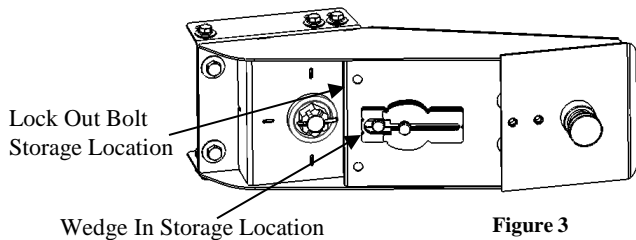
Instructions

⚠ DANGER: Do Not install a wedge without removing the Lock-Out Bolts. Never operate without a wedge if the Lock-Out bolts are not installed. Doing this will create a double pivot and could result in death or serious injury and/or damage to the tow vehicle and trailer.

Installing the Wedge:

1. Remove (2) $\frac{3}{4}$ " Lock-Out bolts and hardware from the rear of the pin-box. You can store them in the holes pointed to. (figure 3)
2. Remove the universal wedge from it's storage location by removing (2) 5/8-11 X 1 $\frac{3}{4}$ " bolts and lock washers.

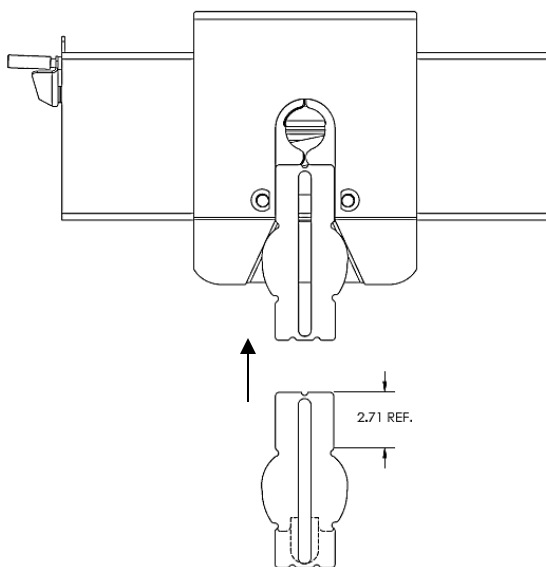
Note: The universal wedge is supplied with the unit and provides a lockout for many different fifth wheel hitches. Cequent Performance Products offers custom wedges designed for specific fifth wheel hitches, check with your RV dealer or call CPP customer service at 1-888-521-0510 to see if we offer a custom wedge for your hitch application for purchase. If a custom wedge is available for your hitch application, CPP recommends replacing the universal wedge with a custom wedge to provide the best fit for your hitch. The universal wedge should remain with the unit as it may be necessary if breakdown occurs to fit a tow vehicle other than your own.



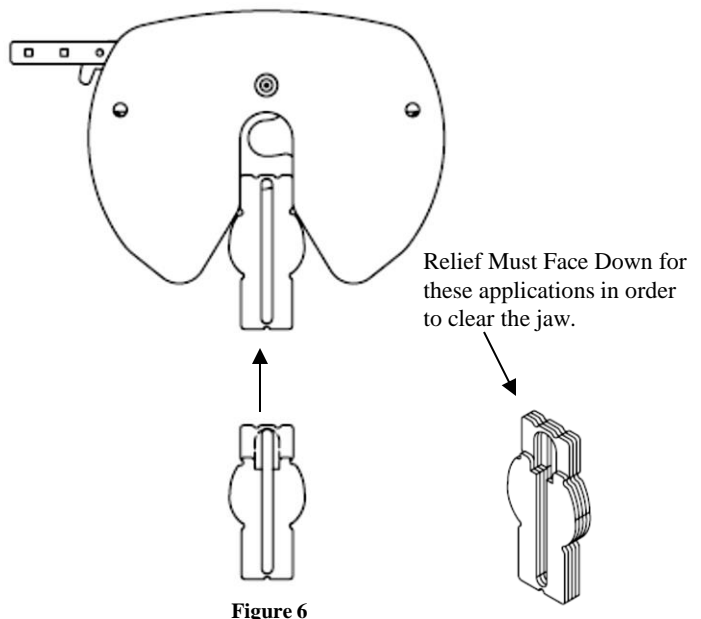
Universal Wedge Orientation: (Visit: <https://www.youtube.com/watch?v=icuiAOGtJnc> for more info)

Before installing the universal wedge in position it is necessary to decide the best orientation for your hitch application. This can be done by referencing the diagrams below.

Orientation for Reese/Draw-Tite/Hidden Hitch Select Series, Pro Series, Husky & similar style fifth wheel heads.



Orientation for Reese/Draw-Tite/Hidden Hitch Signature Series & Select Plus, Reese Titan 16K & 20K, B&W and similar style fifth wheels.

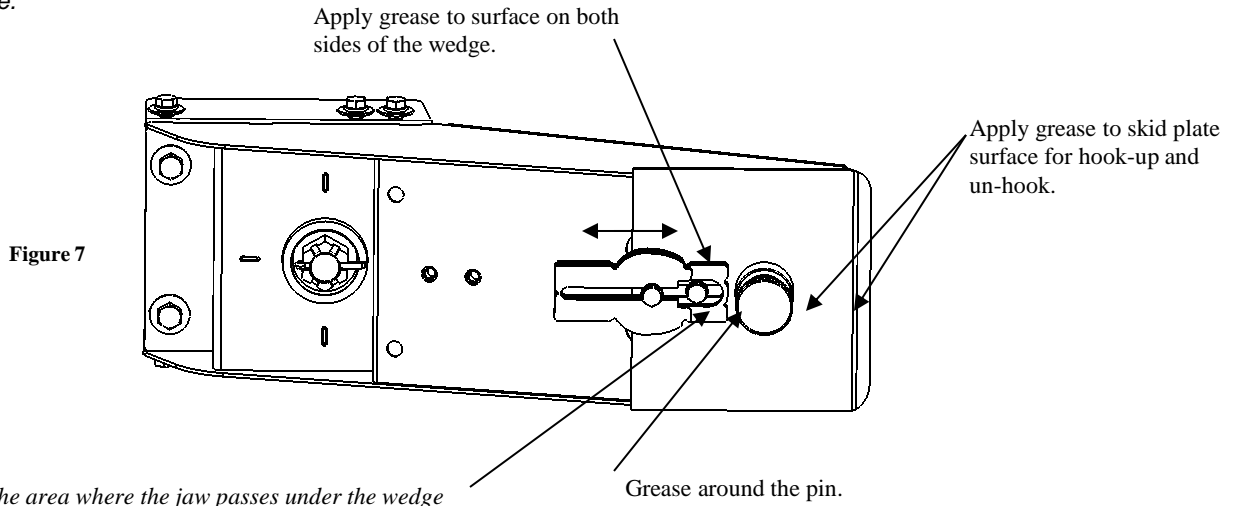


16K Revolution Service Kit

Instructions

Activating the Revolution Feature Con't:

3. Install the universal wedge into the position for the Revolution feature activation (figure 7) , in the proper orientation for your fifth wheel. The bolts will not be fully tightened at this time. (figure 7) Only tighten the (2) 5/8-11 X 1 3/4" wedge bolts until the conical washers begin to engage. The wedge should be allowed to slide with the rap of a hammer or mallet.
4. Apply grease to the surface on both sides of the wedge, the back side of the pin, and the skid plate surface as shown in figure 7. **For all Fifth Wheel Heads, lubricate the area where the jaw passes under the wedge.*



5. Hook-up to the fifth wheel trailer following the hook-up procedure in this manual, for proper latching of the fifth wheel hitch refer to the owners manual for your fifth wheel hitch.
6. With the trailer wheels still firmly blocked, landing gear still resting firm on the ground and supporting the trailer weight, and truck stationary and in park with the emergency brake on: Tap the wedge firmly forward until it will no longer travel. Look to see that the wedge is contacting both side of the funnel area of the hitch. If not is may be necessary to pull trailer forward slightly with the trailer brakes applied to straighten truck hitch and pin box.
7. Attempt to tighten both wedge bolts. Both bolts may not be accessible while the unit is hitched, in these cases tighten the most accessible bolt (usually the rear); these bolts will later be tightened to the proper torque value.
8. Unhook the trailer from the tow vehicle following the unhooking procedure in this manual.
9. Torque (2) 5/8" Wedge Bolts to 150 ft-lbs (figure 8). A thin walled socket may be necessary.
10. The wedge adjustment is a one time adjustment for your fifth wheel hitch. If a different fifth wheel hitch is used after this adjustment, it is necessary to readjust the wedge for the specific fifth wheel hitch.

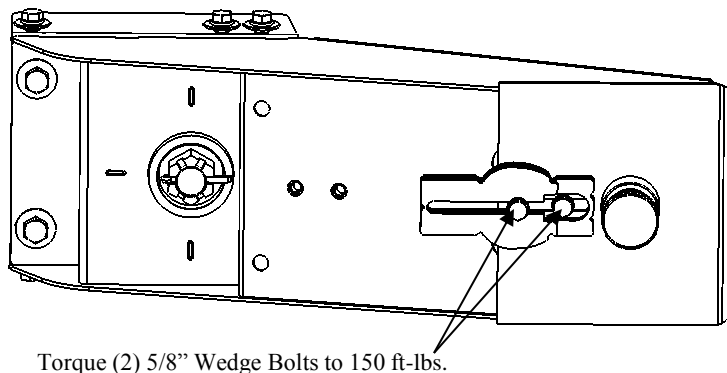


Figure 8

Part Number Purchased:

Place of Purchase:

Date of Purchase:



BEFORE EACH TRIP:

1. **CHECK YOUR EQUIPMENT:** Check the condition of all of your towing equipment and keep it in top condition..
2. Check to see that all bolts are properly tightened.
3. Check wedge engagement in the fifth wheel jaw, refer to wedge adjustment portion of this manual.

MAINTENANCE:

1. To help with hookup and for product longevity: frequently lubricate the wedge surfaces, around the king pin, and the skid plate surface, apply a lithium grease to the bearing surfaces as described in the assembly section of this manual. (Note: Resistance is typical in the Revolution arm)
2. Keep pin-box hitch painted to prevent rust and maintain a good appearance. (Do Not paint over labels)
3. At least once per season, disassemble unit to clean, inspect, lubricate and re-torque fasteners. When reassembling, use lithium grease on the wear plate and bushing. Tighten large nut to a minimum of 80 ft. lbs. and then tighten to the nearest thru hole for cotter pin installation.

LIMITED LIFETIME WARRANTY

1. **Limited Lifetime Warranty (“Warranty”).** Cequent Performance Products, Inc. (“We” or “Us”) warrants to the original consumer purchaser only (“You”) that the product will be free from material defects in both material and workmanship for a period of lifetime of ownership, ordinary wear and tear excepted; provided that installation and use of the product is in accordance with product instructions. There are no other warranties, express or implied, including the warranty of merchantability or fitness for a particular purpose. This warranty is not transferable.
2. **Limitations on the Warranty.** This Warranty does not cover: (a) normal wear and tear; (b) damage through abuse, neglect, misuse, or as a result of any accident or in any other manner; (c) damage from misapplication, overloading, or improper installation; (d) improper maintenance and repair; and (e) product alteration in any manner by anyone other than Us, with the sole exception of alterations made pursuant to product instructions and in a workmanlike manner.
3. **Obligations of Purchaser.** To make a Warranty claim, contact Us at 47912 Halyard Drive Suite 100, Plymouth, MI, 48170, 1-800-632-3290, identify the product by model number, and follow the claim instructions that will be provided. Any returned product that is replaced by Us becomes our property. You will be responsible for return shipping costs. Please retain your purchase receipt to verify date of purchase and that You are the original consumer purchaser. The product and the purchase receipt must be provided to Us in order to process Your warranty claim.
4. **Remedy Limits.** Product replacement is Your sole remedy under this Warranty. We shall not be liable for service or labor charges incurred in removing or replacing a product or any incidental or consequential damages of any kind.
5. **Assumption of Risk.** You acknowledge and agree that any use of the product for any purpose other than the specified use(s) stated in the product instructions is at Your own risk.
6. **Governing Law.** This Warranty gives You specific legal rights, and You also may have other rights which vary from state to state. This Warranty is governed by the laws of the State of Michigan, without regard to rules pertaining to conflicts of law. The state courts located in Oakland County, Michigan shall have exclusive jurisdiction for any disputes relating to this Warranty.

Cequent Performance Products
47912 Halyard Drive Suite 100
Plymouth, MI 48170